

PROJECT: LIFT STATION
LOCATION: CALIFORNIA

Project Description and Location

120" Lift Station Replacement in Laguna Beach, California

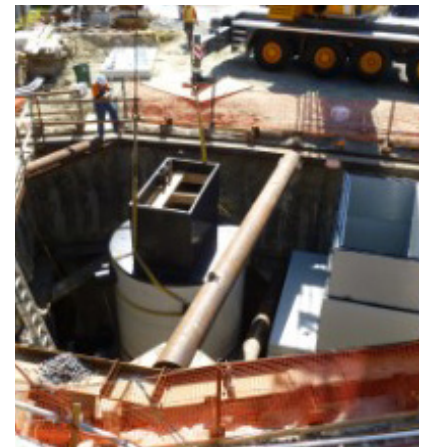
Below ground is the sophisticated pre-manufactured lift station structure with a 10-foot diameter HDPE primary lift station wetwell and an adjacent 10-foot diameter bypass wetwell. This HDPE bypass structure was engineered with pipes, ladders, a fiberglass platform and a unique valving system that allows it to function as a bypass manhole in an emergency.

Project Scope

Redesign and replacement of an 80-year-old lift station that was subject to structural deterioration and ongoing problems with odor, electrical, mechanical and maintenance issues.

Project Status

Installed Spring 2012



Project Benefits

The unique design includes a lifeguard headquarters building that is adjacent to the station where it shares a common shoring wall with the lift station. The lift station is underground with only its electrical control panel and emergency generator located above grade within a lifeguard station closet.

Project Impacts

The new lift station fulfills one of several projects on a laundry list of requirements established in 2003 by the Federal EPA. The station bolsters the city's ongoing program to prevent sewer spills and meet the mandates of the Federal Clean Water Act and the National Pollution Discharge Elimination System permit